



Blast Report



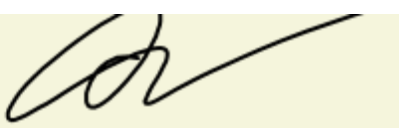
| | | | | |
|---------------|--|------------------|-------|-----|
| Job# | 103-03-01462 | Cust. PO# | N/A | |
| Date | 9/26/2024 | Cust. Supt. Name | RON | |
| Customer Name | D & M Civil Inc | Pick Tks# | 34452 | N/A |
| Job Address | Cell Signaling Site D & M Civil Inc By The Sea | N/A | N/A | N/A |
| | | N/A | N/A | N/A |

State MA Permit No. _____ Identify Hazards

Pre Shift Insp.Time (24hrs) : 7:00:00 AM FLY ROCK
PROPERTY DAMAGE

Post Shift Insp.Time (24hrs): 3:00:00 PM

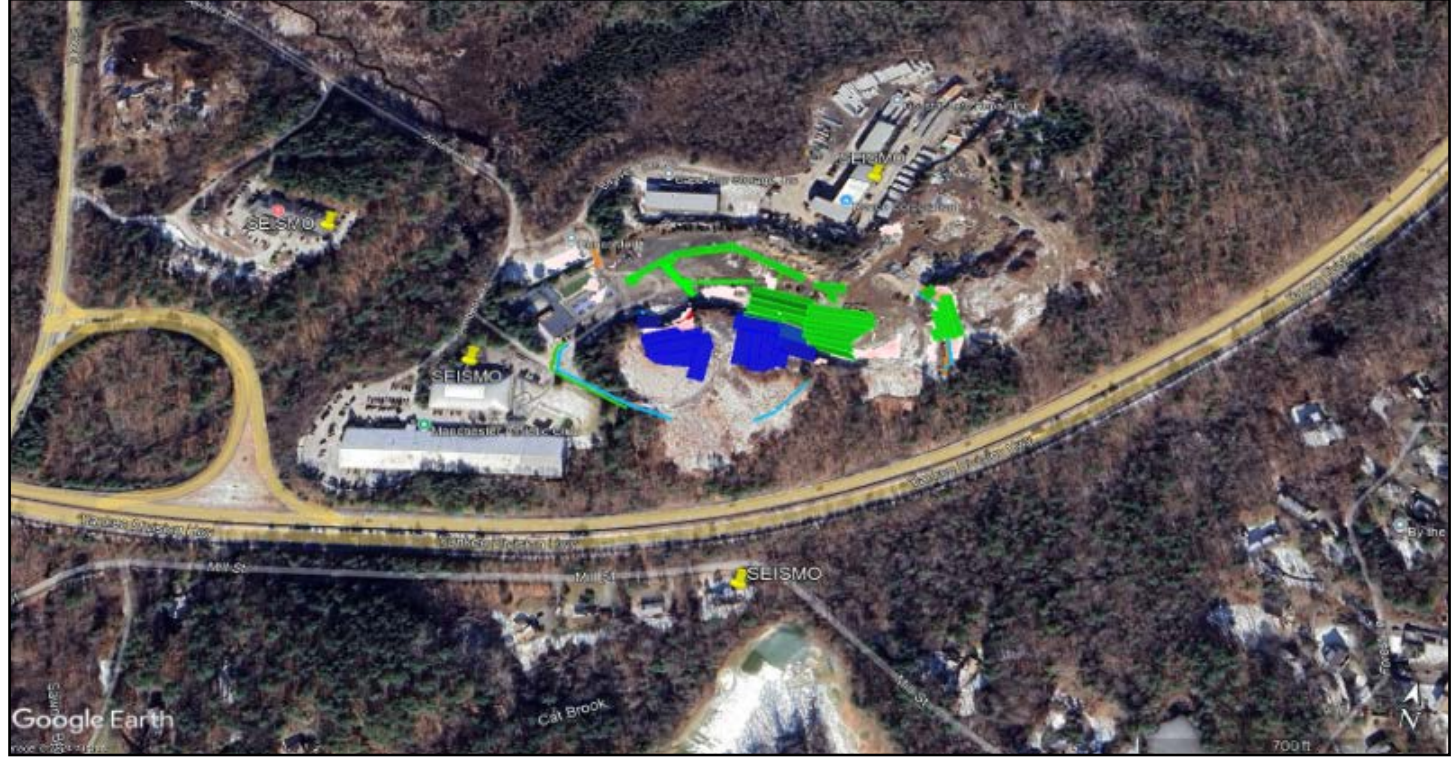
Blaster : Swaby;Hoip D Precautions Taken:
License #: 007151 DOUBLE MAT & USE BLAST DESIGN
Signature: MOVE ALL MOVEABLES



Weather Comments:
CLOUDY

| | | | |
|----------------------|----------|--------|-----|
| No. of Crew Members | <u>3</u> | | |
| Crew Members Names : | | | |
| DAVID S | MIKE C | PAUL C | N/A |
| N/A | N/A | N/A | N/A |
| N/A | N/A | N/A | N/A |

Seismograph Monitoring Plan (Not to Scale):



Shot # 43 Shot Time (24hrs) 11:20 Shot VideoTaped: Y

Weather

Notes: SHOT #43
 BLAST FOR BUILDING & RETAINING WALL
 ELEVATION FOR BUILDING & RETAINING WALL IS 105
 DRILLED TO ELEVATION 102 FOR BUILDING & RETAINING WALL.

Weather Conditions: Cloudy
 Temp (°F): 55-65
 Wind Direction: North
 Wind Spd: 1-5 MPH

Preblast

Blast Direction: South-East Max Holes/Delay: 1 Predicted K Factor: 160
 Blast Location: BUILDING Slope: -1.6 Scale Dist.: 59.88
 Location of Structure: MANCHESTER ATHLETIC CLUB Predicted Max Weigh/Delay: 58 Lbs Predicted PPV: 0.23
 Measurement Google Map Dist. to Closest (Ft) Structure 456 Railroad/Highway 518 Overhead Util 582 Underground Util 582

Pay Quantities

Pay Calculations Notes

Fire Detail # of Hrs: 8
 Pay Square Area 2376 Feet
 N/A N/A
 N/A N/A

6 X 9 X 44 HOLES = 2376 SQ FT

Shot Info

Configuration

1 - Open

Total Drill Depth(Ft) 660.00 Total SqFt 2376.00 Avg Powder 1.57 Lbs/Cyd Total Product Weight (Lbs) : 2072
 Total Tons N/A Total Yards 1320.00 Factor 0.64 Cyd/Lbs Avg Weight / Hole (Lbs): 47.09

Cal Method Pattern
 # Holes 44 # Loaded Holes 44 Cover Used/No Blast 30

| | AVG | Min | Max | | | Min | Max |
|-------------------|-----|-----|-----|---------------------------|--------------------|-----|-----|
| Drill Depth | 15 | 12 | 18 | Stone Weight | N/A /Cyd | 5 | 8 |
| Burden(Feet) | 6 | 6 | 6 | Type of Terrain | Hilly | 1 | 1 |
| Spacing (Feet) | 9 | 9 | 9 | Type of Rock | Granite | 0 | 0 |
| Hole Diameter | 3.5 | 3.5 | 3.5 | Stemming Type | 3/8" Crushed Stone | 28 | 58 |
| OverBurden (Ft) | 1 | 0 | 4 | Height of Face | 0 | 0 | 3 |
| Control Row Taped | Y | | | Angled Holes /Face Bermed | N/Y | | |
| | | | | Laser/BoreTracking | N | | |

Total Pounds 2072.22 Lbs

Type Of Initiation: **Non-Electric**

| Product # | Desc | Density | Wgt |
|------------------------|-------------------|------------|--------------------|
| QR743G | TITAN 1000 LD (G) | 1.25 | 2013.00 Lbs |
| BA BULK Totals: | | N/A | 2013.00 Lbs |

| Product # | Desc | Qty | Length |
|---------------------------|-------------------------------------|-----------|--------|
| DXABZ629 | NONEL EZDET 25/350 30FT ZCOMP 40/CS | 60 | |
| DETS DHOLE Totals: | | 60 | |

| Product # | Desc | Qty | Wgt |
|----------------------|-------------------------------------|-----------|------------------|
| DN260420008 | DYNAMAX PRO 2X8 (50X200) TS EC CAPW | 47 | 59.22 Lbs |
| HI-EX Totals: | | 47 | 59.22 Lbs |

| Product # | Desc | Qty | Length |
|----------------------|---------------------------------|----------|--------|
| DJ25025 | NONEL LEADLINE 2500FT/762M 2/CS | 1 | 2500 |
| LINES Totals: | | 1 | |

| Product # | Desc | Qty | Length |
|---------------------------|--------------------------------------|-----------|--------|
| DY17Z820ME | NONEL EZTL CPZ 17 MS 20/FT 60/120/CS | 20 | |
| DY25Z812ME | NONEL EZTL CPZ 25 MS 12FT 90/180/CS | 50 | |
| SURF DELAY Totals: | | 70 | |

Descriptor: MAX/LBS

| Elevation | Feet |
|-------------------------|--------------|
| Brench (ft) | N/A |
| Floor (ft) | N/A |
| Overburden (ft) | 1 |
| Sub Drilling(ft) | 3 |
| Total Depth (ft) | 17.00 |

| | |
|---|----|
| Stemming Stones | 6 |
| TITAN 1000 LD (G) | 11 |
| DYNOMAX PRO 2X8 (50X200) TS EC CAPW 19.3KG | 0 |
| N/A | |
| N/A | |
| N/A | |
| N/A | |
| N/A | |
| N/A | |
| N/A | |
| N/A | |
| N/A | |
| N/A | |
| N/A | |



Seismographs

Actual Max Weight/Delay:58

Lbs

| Operator Name | Location of Seis | GPS Location | Seis # | Monitor Log Status | Actual PPV | Actual PPV Freq, | Actual db | Actual Dist. (ft) | Actual K Factor |
|---------------|--------------------------|---------------|--------|--------------------|------------|------------------|-----------|-------------------|-----------------|
| DAVID S | MANCHESTER ATHLETIC CLUB | 42°35'30.75"N | 10793 | Triggered | 0.115 | 28.4 | 129.6 | 456 | 80 |
| DAVID S | 1 BEAVER DAM RD | 42°35'39.26"N | 10289 | Threshold Not Met | N/A | N/A | N/A | 729 | N/A |
| MARCUS K | 27 MILL ST | 42.592791 N | 10883 | Triggered | 0.080 | 32.0 | 111.5 | 776 | 131 |
| MARCUS K | MEDICAL BUILDING | 42.590592 N | 10260 | Threshold Not Met | N/A | N/A | N/A | 909 | N/A |