



Blast Report

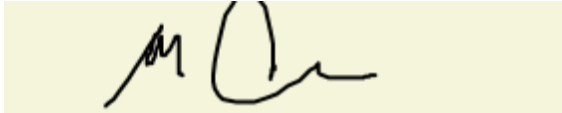


Job#	103-03-01462	Cust. PO#	N/A	
Date	10/3/2024	Cust. Supt. Name	ronny	
Customer Name	D & M Civil Inc	Pick Tkts#	34460	N/A
Job Address	Cell Signaling Site D & M Civil Inc By The Sea	N/A	N/A	N/A
		N/A	N/A	N/A

State MA Permit No. _____ Identify Hazards

Pre Shift Insp.Time (24hrs) : 6:30:00 AM dust.exposed wall with relief. bad mats
 Post Shift Insp.Time (24hrs): 3:00:00 PM

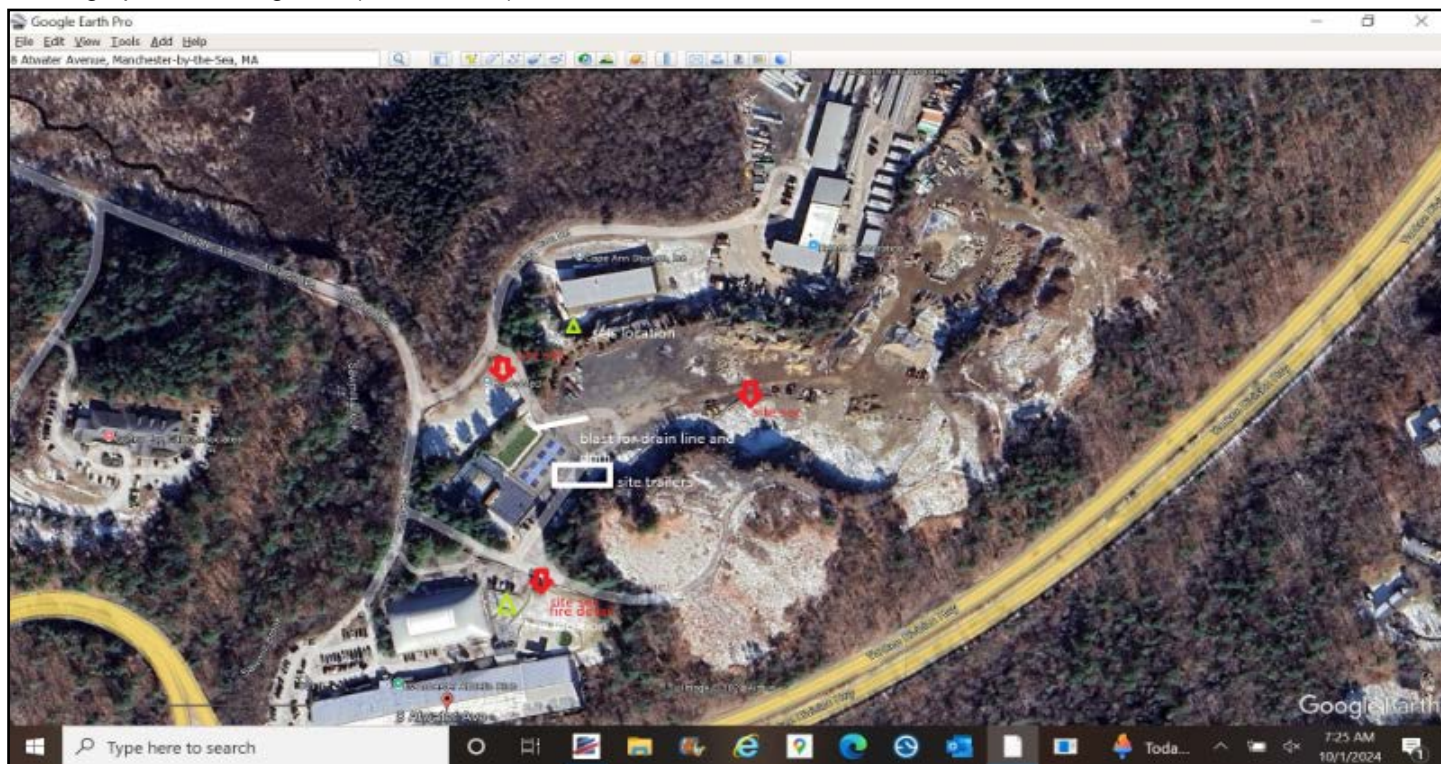
Blaster : Carr;Michael J Precautions Taken:
 License #: 7032 site sec.load accord. fire detail

Signature: 

Weather Comments:
clear

No. of Crew Members	<u>1</u>		
Crew Members Names :			
<u>matt l</u>	<u>N/A</u>	<u>N/A</u>	<u>N/A</u>
<u>N/A</u>	<u>N/A</u>	<u>N/A</u>	<u>N/A</u>
<u>N/A</u>	<u>N/A</u>	<u>N/A</u>	<u>N/A</u>

Seismograph Monitoring Plan (Not to Scale):



Shot # 5 Shot Time (24hrs) 23:32 Shot VideoTaped: Y

Weather

Notes: 2 shot locations, drainage tank and drain line next to wall. fire detail onsite. probed lower pond area no rock found to 9ft. also drilled boulders. drill resumed drilling up top, perforation drilling. 4 seis locations. no issues.

Weather Conditions: Clear
 Temp (°F): 56-72
 Wind Direction: North
 Wind Spd: 5-12 MPH

Preblast

Blast Direction: North-East Max Holes/Delay: 2 Predicted K Factor: 160
 Blast Location: drain and drain tank Slope: -1.6 Scale Dist.: 34.72
 Location of Structure: renco bld,6 beaver dam rd Predicted Max Weigh/Delay: 42 Lbs Predicted PPV: 0.55
 Measurement Google Map Dist. to Closest (Ft) Structure 225 Railroad/Highway 1000 Overhead Util 1000 Underground Util 300

Pay Quantities

Pay Calculations Notes

Fire Detail # of Hrs: 6
 Lump Sum 1728 LS
 N/A N/A N/A
 N/A N/A N/A

8x6x8=384sf drain 24x7x8=1344 1728sf water tank

Shot Info

Configuration

1 - Open

Total Drill Depth(Ft) 512.00 Total SqFt 1536.00 Avg Powder 1.47 Lbs/Cyd Total Product Weight (Lbs) : 1334
 Total Tons N/A Total Yards 910.22 Factor 0.68 Cyd/Lbs Avg Weight / Hole (Lbs): 41.69

Cal Method Pattern
 # Holes 32 # Loaded Holes 32 Cover Used/No Blast 21

	AVG	Min	Max			Min	Max
Drill Depth	16	12	19	Stone Weight	N/A /Cyd	6	8
Burden(Feet)	6 Feet	7	7	Type of Terrain	Flat	1	1
Spacing (Feet)	8 Feet	8	8	Type of Rock	Granite	0	0
Hole Diameter	3.4	3.4	3.4	Stemming Type	3/8" Crushed Stone	24	42
OverBurden (Ft)	0	2	3	Height of Face	0	0	4

Control Row Taped N Angled Holes /Face Bermed N/N Laser/BoreTracking N

Total Pounds 1334.32 Lbs

Type Of Initiation: Non-Electric

Product #	Desc	Density	Wgt
QR743G	TITAN 1000 LD (G)	1.25	1294.00 Lbs
BA BULK Totals:		N/A	1294.00 Lbs

Product #	Desc	Qty	Length
DXABZ629	NONEL EZDET 25/350 30FT ZCOMP 40/CS	32	
DETS DHOLE Totals:		32	

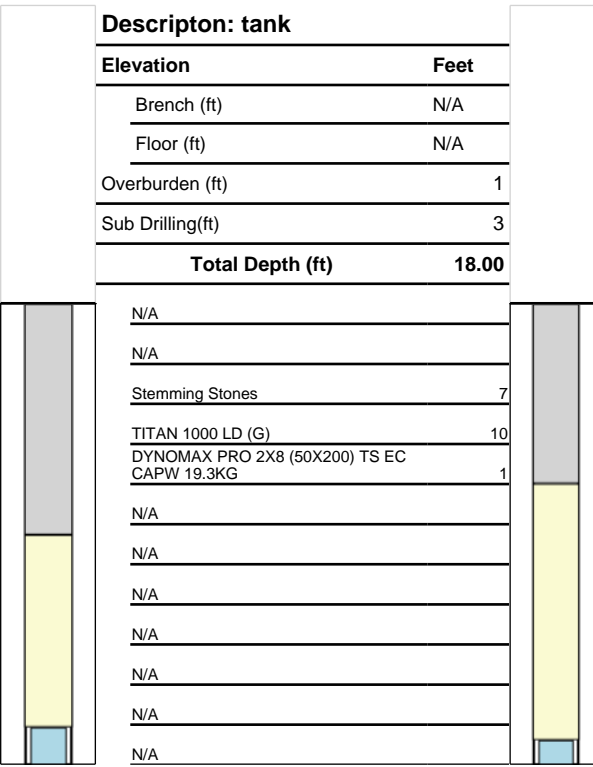
Product #	Desc	Qty	Wgt
DN260420008	DYNAMAX PRO 2X8 (50X200) TS EC CAPW	32	40.32 Lbs
HI-EX Totals:		32	40.32 Lbs

Product #	Desc	Qty	Length
DY17Z812ME	NONEL EZTL CPZ 17 MS 12FT 90/180/CS	18	
DY25Z812ME	NONEL EZTL CPZ 25 MS 12FT 90/180/CS	35	
SURF DELAY Totals:		53	

Descripton: drain line

Elevation	Feet
Brench (ft)	N/A
Floor (ft)	N/A
Overburden (ft)	3
Sub Drilling(ft)	3
Total Depth (ft)	12.00

N/A	
N/A	
Stemming Stones	6
TITAN 1000 LD (G)	5
DYNOMAX PRO 2X8 (50X200) TS EC CAPW 19.3KG	1
N/A	
N/A	
N/A	
N/A	
N/A	
N/A	
N/A	
N/A	
N/A	



Descripton: tank

Elevation	Feet
Brench (ft)	N/A
Floor (ft)	N/A
Overburden (ft)	1
Sub Drilling(ft)	3
Total Depth (ft)	18.00

N/A	
N/A	
Stemming Stones	7
TITAN 1000 LD (G)	10
DYNOMAX PRO 2X8 (50X200) TS EC CAPW 19.3KG	1
N/A	
N/A	
N/A	
N/A	
N/A	
N/A	
N/A	
N/A	
N/A	

Seismographs

Actual Max Weight/Delay:42

Lbs

Operator Name	Location of Seis	GPS Location	Seis #	Monitor Log Status	Actual PPV	Actual PPV Freq,	Actual db	Actual Dist. (ft)	Actual K Factor
mike carr	renco bld,6 beaver dam rd	42.35n 70.45w	10313	Triggered	0.43	56	116	225	125
mike carr	athletic club	42.35n 30.75w	10291	Triggered	0.19	46	119	345	110
sub contract	med bld	42.59n 05.92w	sauls 1026	Threshold Not Met	N/A	N/A	N/A	1000	N/A
sub contract	27 mill st	42.59n 05.92w	sauls 1088	Triggered	0.11	46	107.5	650	175