



Blast Report

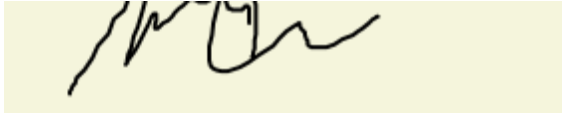


Job#	103-03-01462	Cust. PO#	N/A	
Date	10/1/2024	Cust. Supt. Name	kevin	
Customer Name	D & M Civil Inc	Pick Tkts#	34458	N/A
Job Address	Cell Signaling Site D & M Civil Inc By The Sea	N/A	N/A	N/A
		N/A	N/A	N/A

State MA Permit No. _____ Identify Hazards

Pre Shift Insp.Time (24hrs) : 6:30:00 AM dust, truck traffic, mats
 Post Shift Insp.Time (24hrs): 2:00:00 PM

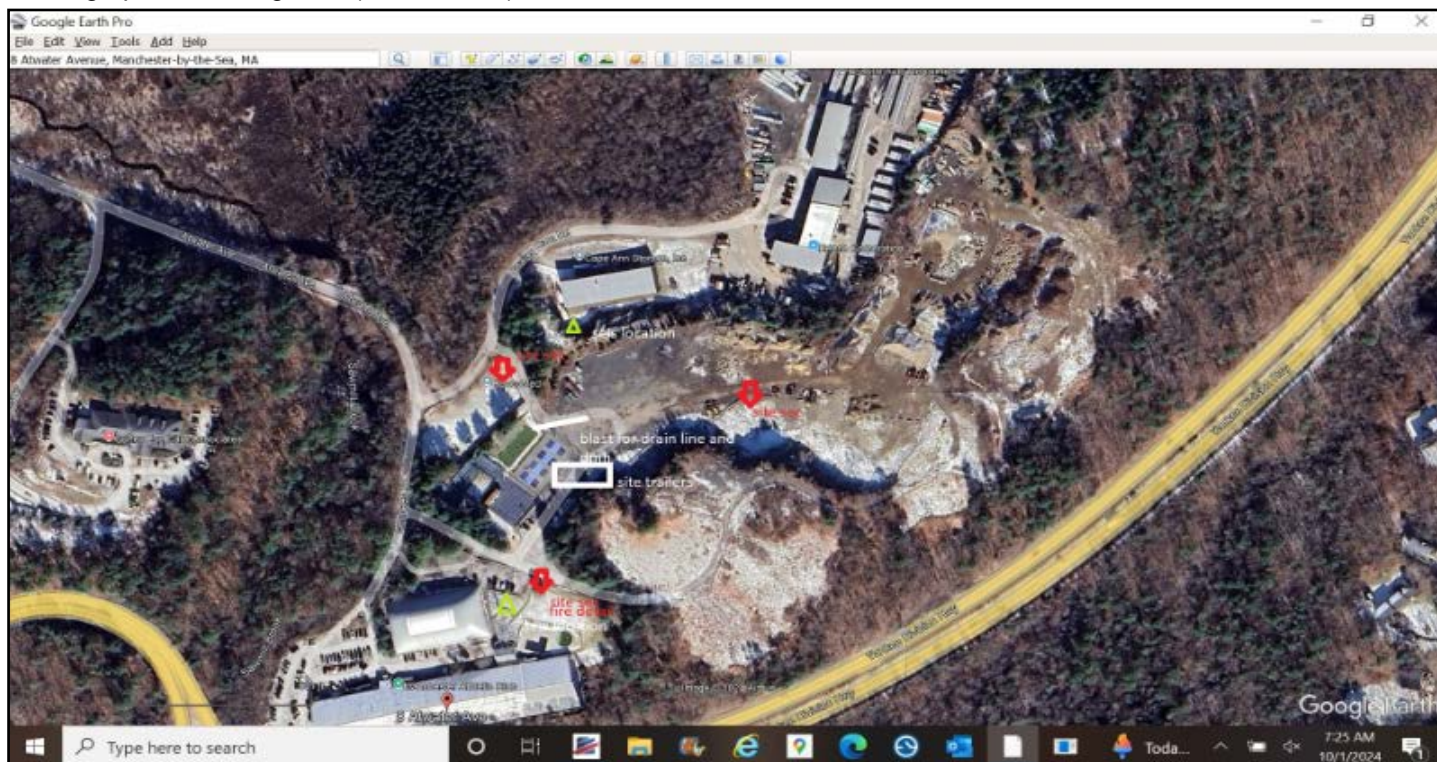
Blaster : Carr; Michael J Precautions Taken:
 License #: 7032 site sec. chain inspection, fire detail

Signature:


Weather Comments:
clear, overcast

No. of Crew Members	<u>1</u>		
Crew Members Names :			
m lambert	<u>N/A</u>	<u>N/A</u>	<u>N/A</u>
N/A	<u>N/A</u>	<u>N/A</u>	<u>N/A</u>
N/A	<u>N/A</u>	<u>N/A</u>	<u>N/A</u>

Seismograph Monitoring Plan (Not to Scale):



Shot # 2 Shot Time (24hrs) 12:30 Shot VideoTaped: Y

Weather

Notes: blast for drain line and structure, cuts provided by d.m.

Weather Conditions: Cloudy
 Temp (°F): 67-69
 Wind Direction: North
 Wind Spd: 5-20 MPH

Preblast

Blast Direction: North-East Max Holes/Delay: 2 Predicted K Factor: 160
 Blast Location: drain line 25ft off site trailer Slope: -1.6 Scale Dist.: 53.07
 Location of Structure: athletic club Predicted Max Weigh/Delay: 24 Lbs Predicted PPV: 0.28
 Measurement Google Map Dist. to Closest (Ft) Structure 260 Railroad/Highway 1000 Overhead Util 1000 Underground Util 200

Pay Quantities

Pay Calculations Notes

Fire Detail # of Hrs: N/A
 Lump Sum 1200 LS
 N/A N/A N/A
 N/A N/A N/A

5x8x30

Shot Info

Configuration

1 - Trench

Total Drill Depth(Ft)	<u>360.00</u>	Total SqFt	<u>1200.00</u>	Avg Powder	<u>1.31 Lbs/Cyd</u>	Total Product Weight (Lbs) :	<u>697</u>
Total Tons	<u>N/A</u>	Total Yards	<u>533.33</u>	Factor	<u>0.77 Cyd/Lbs</u>	Avg Weight / Hole (Lbs):	<u>23.23</u>

Cal Method	Pattern								
# Holes	<u>30</u>	# Loaded Holes	<u>30</u>	Cover Used/No Blast	<u>21</u>				
	AVG	Min	Max						
Drill Depth	<u>12</u>	<u>12</u>	<u>12</u>	Stone Weight	<u>0 /Cyd</u>	Top Stemming	<u>6</u> Min	<u>7</u> Max	
Burden(Feet)	<u>8</u> Feet	<u>8</u>	<u>8</u>	Type of Terrain	<u>Flat</u>	Charges/Hole	<u>1</u> Min	<u>1</u> Max	
Spacing (Feet)	<u>5</u> Feet	<u>5</u>	<u>5</u>	Type of Rock	<u>Granite</u>	Deck Stemming	<u>0</u> Min	<u>0</u> Max	
Hole Diameter	<u>3.4</u>	<u>3.4</u>	<u>3.4</u>	Stemming Type	<u>3/8" Crushed Stone</u>	Charge Wgt/Deck	<u>23</u> Min	<u>24</u> Max	
OverBurden (Ft)	<u>0</u>	<u>2</u>	<u>4</u>	Height of Face	<u>0</u>	Depth of Water	<u>0</u> Min	<u>3</u> Max	
Control Row Taped	<u>N</u>			Angled Holes /Face Bermed	<u>N/N</u>	Laser/BoreTracking	<u>N</u>		

Total Pounds 697.32 Lbs

Type Of Initiation: Non-Electric

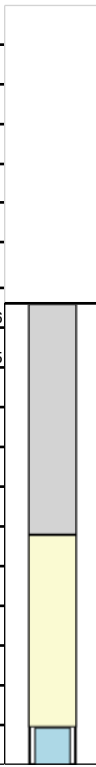
Product #	Desc	Density	Wgt
QR743G	TITAN 1000 LD (G)	1.25	657.00 Lbs
BA BULK Totals:		N/A	657.00 Lbs
Product #	Desc	Qty	Wgt
DN260420008	DYNAMAX PRO 2X8 (50X200) TS EC CAPW	32	40.32 Lbs
HI-EX Totals:		32	40.32 Lbs

Product #	Desc	Qty	Length
DXABZ623	NONEL EZDET 25/350 24FT ZCOMP 60/CS	30	
DETS DHOLE Totals:		30	
Product #	Desc	Qty	Length
DJ25025	NONEL LEADLINE 2500FT/762M 2/CS	1	500
LINES Totals:		1	
Product #	Desc	Qty	Length
DY17Z812ME	NONEL EZTL CPZ 17 MS 12FT 90/180/CS		
DY17Z812ME	NONEL EZTL CPZ 17 MS 12FT 90/180/CS	7	
DY25Z812ME	NONEL EZTL CPZ 25 MS 12FT 90/180/CS	33	
SURF DELAY Totals:		40	

Descripton: pro

Elevation	Feet
Brench (ft)	N/A
Floor (ft)	N/A
Overburden (ft)	0
Sub Drilling(ft)	3
Total Depth (ft)	12.00

Stemming Stones	6
TITAN 1000 LD (G)	5
DYNOMAX PRO 2X8 (50X200) TS EC CAPW 19.3KG	1
N/A	
N/A	
N/A	
N/A	
N/A	
N/A	
N/A	
N/A	
N/A	
N/A	



Seismographs

Actual Max Weight/Delay:23

Lbs

Operator Name	Location of Seis	GPS Location	Seis #	Monitor Log Status	Actual PPV	Actual PPV Freq,	Actual db	Actual Dist. (ft)	Actual K Factor
mike c	athletic club	n.a	10291	Triggered	0.71	51	119	260	423
mike c	renco med bld	n.a	10313	Triggered	0.28	64	114	300	209