



Blast Report



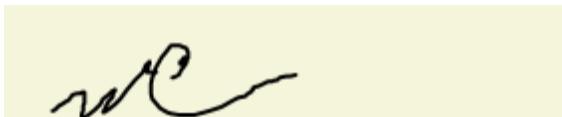
Job#	103-03-01462	Cust. PO#	N/A	
Date	10/17/2024	Cust. Supt. Name	ronnie	
Customer Name	D & M Civil Inc	Pick Tkts#	34484	N/A
Job Address	Cell Signaling Site D & M Civil Inc By The Sea	N/A	N/A	N/A
		N/A	N/A	N/A

State MA Permit No. _____ Identify Hazards

Pre Shift Insp.Time (24hrs) : 6:30:00 AM [mats.cutoffs.mp trailer](#)
 Post Shift Insp.Time (24hrs): 2:00:00 PM

Blaster : Carr;Michael J Precautions Taken:
 License #: 7032 [pre check.site sec.fire detail](#)

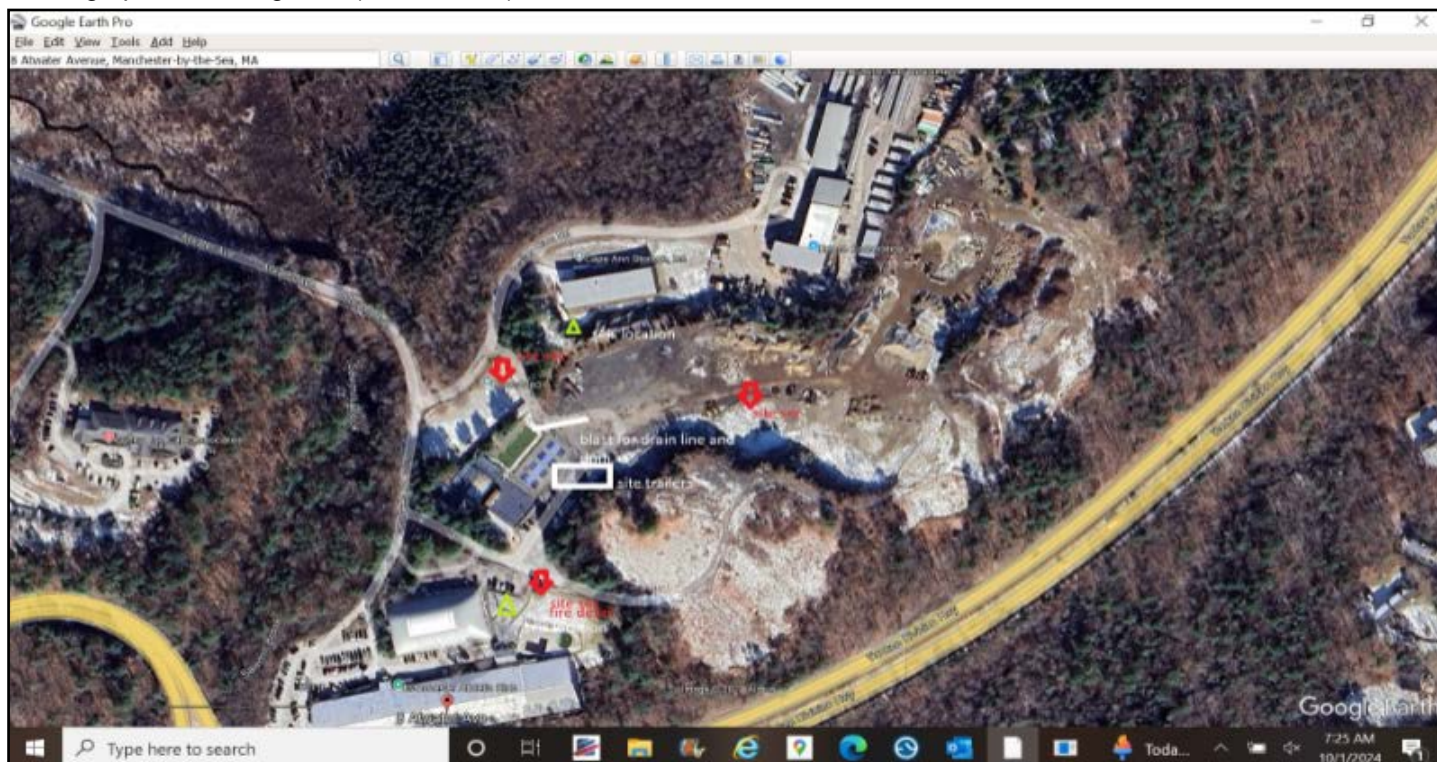
Signature:



Weather Comments:
clear

No. of Crew Members	<u>1</u>		
Crew Members Names :			
N/A	N/A	N/A	N/A
N/A	N/A	N/A	N/A
N/A	N/A	N/A	N/A

Seismograph Monitoring Plan (Not to Scale):



Shot # 10 Shot Time (24hrs) 11:40 Shot VideoTaped: Y

Weather

Notes: upper bench area for bld, grades given by d m. fire detail onsite, mats used. 4 seis locations.

Weather Conditions: N/A
 Temp (°F): 50-65
 Wind Direction: North
 Wind Spd: 15-20 MPH

Preblast

Blast Direction: South-West Max Holes/Delay: 2.00 Predicted K Factor: 160
 Blast Location: upper bench Slope: -1.60 Scale Dist.: 47.19
 Location of Structure: athletic tennis club Predicted Max Weigh/Delay: 55 Lbs Predicted PPV: 0.34
 Measurement Google Map Dist. to Closest (Ft) Structure 350 Railroad/Highway 1000 Overhead Util 1000 Underground Util 300

Pay Quantities

Pay Calculations Notes

Fire Detail # of Hrs: 4
 Lump Sum 2160 LS
 N/A N/A N/A
 N/A N/A N/A

40x6x9

Shot Info

Configuration

1 - Open

Total Drill Depth(Ft) 640.00 Total SqFt 2160.00 Avg Powder 1.70 Lbs/Cyd Total Product Weight (Lbs) : 2178
 Total Tons N/A Total Yards 1280.00 Factor 0.59 Cyd/Lbs Avg Weight / Hole (Lbs): 54.45

Cal Method Pattern
 # Holes 40 # Loaded Holes 40 Cover Used/No Blast 21

	AVG	Min	Max			Min	Max
Drill Depth	16.00	16.00	16.00	Stone Weight	N/A /Cyd	6.00	7.00
Burden(Feet)	6.00	6.00	6.00	Type of Terrain	Flat	1	1
Spacing (Feet)	9.00	9.00	9.00	Type of Rock	Granite	0.00	0.00
Hole Diameter	3.50	3.40	3.50	Stemming Type	3/8" Crushed Stone	53	55
OverBurden (Ft)	0.00	2.00	3.00	Height of Face	0.00	0.00	1.00

Control Row Taped N Angled Holes /Face Bermed N/N Laser/BoreTracking N

Total Pounds 2178.40 Lbs

Type Of Initiation: Non-Electric

Product #	Desc	Density	Wgt
QR743G	TITAN 1000 LD (G)	1.25	2128.00 Lbs
BA BULK Totals:		N/A	2128.00 Lbs

Product #	Desc	Qty	Length
DXABZ629	NONEL EZDET 25/350 30FT ZCOMP 40/CS	40	
DETS DHOLE Totals:		40	

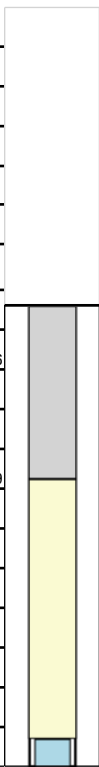
Product #	Desc	Qty	Wgt
DN260420008	DYNAMAX PRO 2X8 (50X200) TS EC CAPW	40	50.40 Lbs
HI-EX Totals:		40	50.40 Lbs

Product #	Desc	Qty	Length
DY17Z812ME	NONEL EZTL CPZ 17 MS 12FT 90/180/CS	12	
DY25Z812ME	NONEL EZTL CPZ 25 MS 12FT 90/180/CS	44	
SURF DELAY Totals:		56	

Descripton: pro

Elevation	Feet
Brench (ft)	N/A
Floor (ft)	N/A
Overburden (ft)	1.00
Sub Drilling(ft)	3.00
Total Depth (ft)	16.00

N/A	
Stemming Stones	6
N/A	
N/A	
TITAN 1000 LD (G)	9
DYNAMAX PRO 2X8 (50X200) TS EC CAPW 19.3KG 34/CS	1
N/A	
N/A	
N/A	
N/A	
N/A	
N/A	



Seismographs

Actual Max Weight/Delay:55

Lbs

Operator Name	Location of Seis	GPS Location	Seis #	Monitor Log Status	Actual PPV	Actual PPV Freq,	Actual db	Actual Dist. (ft)	Actual K Factor
mike c	athletic tennis club	42,3531n 70,4539w	10313	Triggered	0.40	56	112	350	191
mike c	renco medical bld	42,3537n 70,4536w	10291	Triggered	0.16	42	121	425	104
sub contract	27 mill st	42,3525n 70,4529w	sauls 1088	Triggered	0.08	25	107	756	131
sub contract	medical bld,sauls	42,3533 70,4547w	sauls 1026	Threshold Not Met	N/A	N/A	N/A	976	N/A